

San Xavier District Transportation Projects

Strategies and Successes

Michael K. Bends, Planning Administrator

Nathan Barrett, Planner



Successful Projects

- San Xavier River Pedestrian Bridge
- Mission San Xavier del Bac Plaza Pedestrian Enhancements
- Little Nogales & San Xavier Roads Intersection Drainage Study
- Pedestrian Access and Safety Study (PARA)



Successful Projects - Topics

- Project Overview
- Funding Strategies and Lessons Learned
- Funding Sources

I-10

TUCSON

I-19

TI
A

San Xavier District

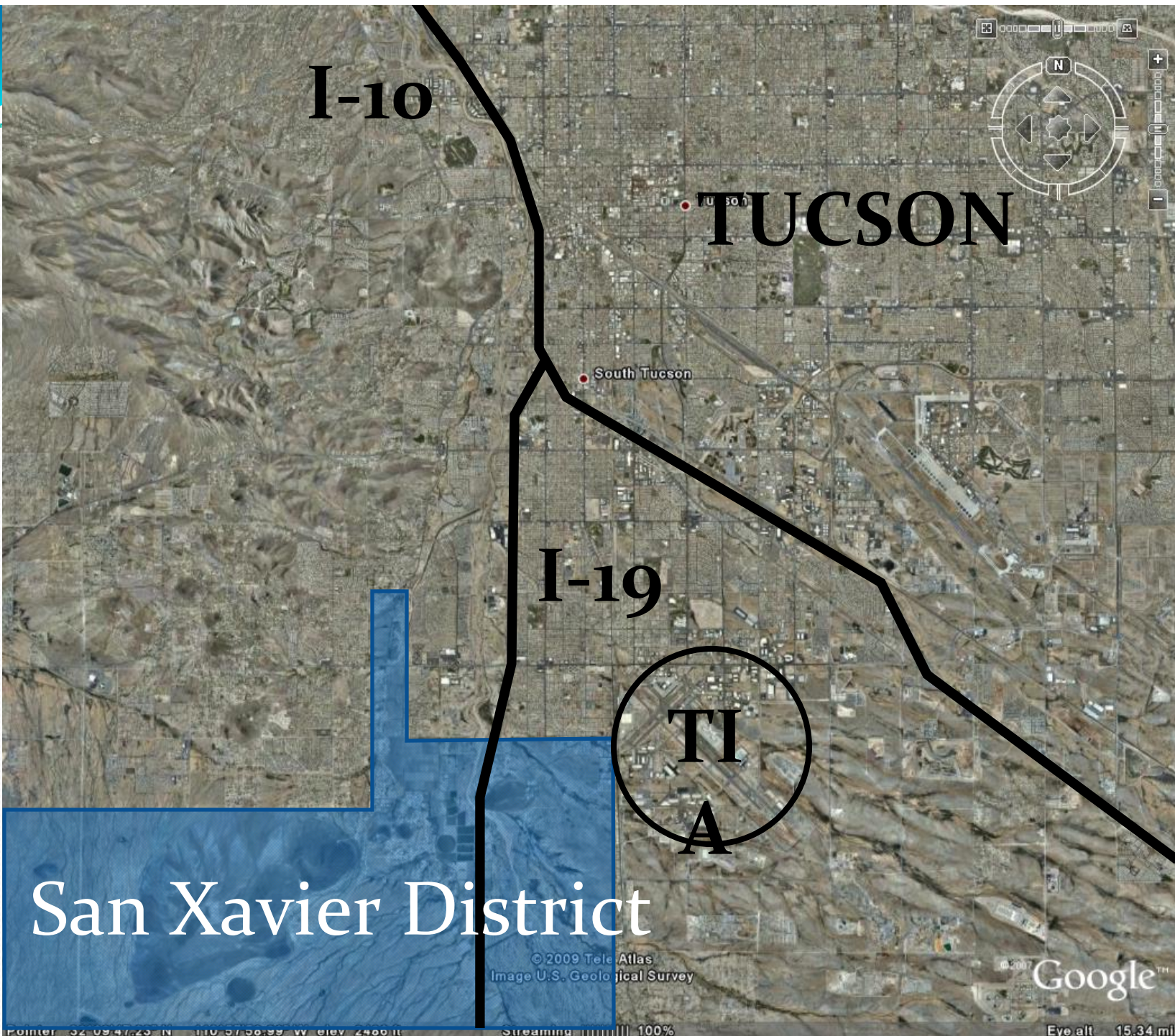
© 2009 Tele Atlas
Image U.S. Geological Survey

Google™

Pointer 32 09 47.25 N 110 57 56.99 W elev 2460 ft

Streaming 100%

Eye alt 15.34 mi



San Xavier River Pedestrian Bridge: Project Overview

- Vehicular Bridge is too narrow to accommodate pedestrians
- Housing on either side of the bridge
- Community and Regional facilities on either side of the bridge (Mission, Clinic, Casino, Recreation Center, etc.)

Santa Cruz River

I-19

Casino

San Xavier
Mission

Bridge Location

Health
Clinic

Recreation
Center

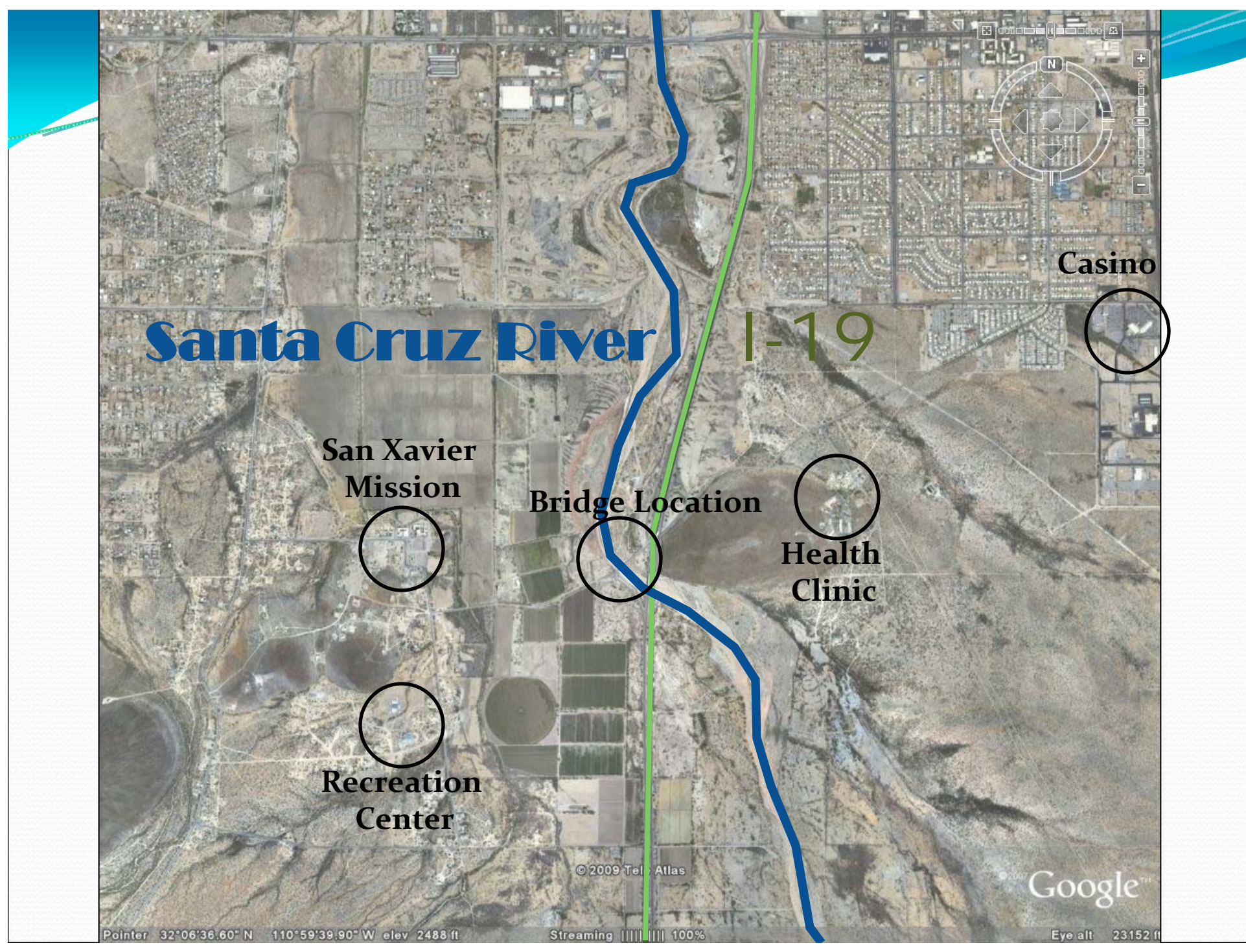
© 2009 Tel Atlas

Google

Pointer 32°06'36.60" N 110°59'39.90" W elev 2488 ft

Streaming 100%

Eye alt 23152 ft





San Xavier Pedestrian Bridge: Funding Strategies / Lessons Learned

- A picture is worth a thousand words
- ADOT ROW = ADOT Funding
- Emphasizing the regional context
- Emphasizing the safety impacts

A Thousand Words



San Xavier Pedestrian Bridge: Funding Sources

- Pima Association of Governments
 - STP Funds
 - Programmed for 2012 TIP
 - \$1,500,000
- Arizona Department of Transportation
 - Tucson District Discretionary Funds
 - \$500,000
- Transportation Enhancement Grant
 - Requesting \$1,000,000 (for the bridge or approaches)

Mission Plaza Ped Enhancements: Project Overview

- Last phase of a decade-old project which ran short of funds
- Community had already approved the project designs
- Visitors and community members concerned about access for elderly and disabled individuals
- Last-minute funding opportunity

Santa Cruz
River
San Xavier
Mission

I-19



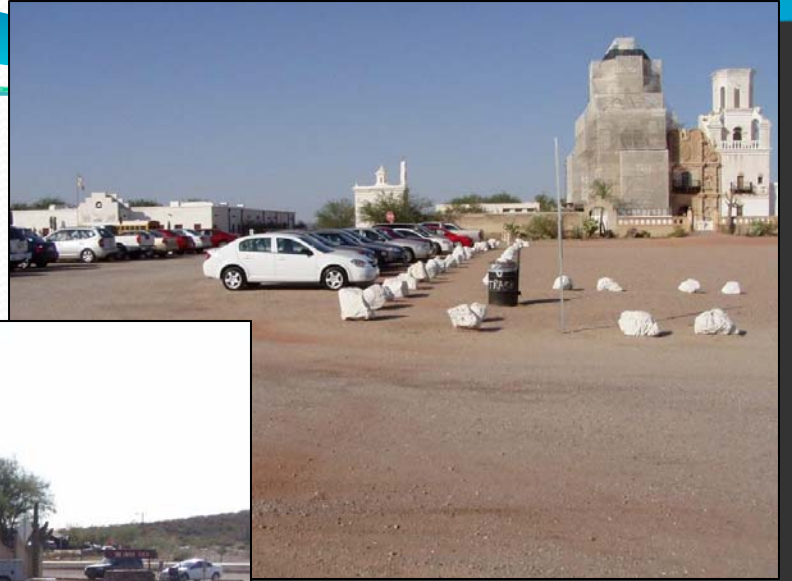
© 2009 Tel Atlas

Google™

Pointer 32°06'36.60" N 110°59'39.90" W elev 2488 ft

Streaming 100%

Eye alt 23152 ft





Mission Plaza Ped Enhancements: Funding Strategies

- Don't wait until you have all the answers
- Maintain good relationships with neighboring jurisdictions
- Focus on the Funder's Priorities
 - Other project elements were included, but we emphasized the Elderly Safety elements

Mission Plaza Ped Enhancements: Funding Sources

- Regional Transportation Authority of Pima County
 - Categorical Funds—Elderly and Pedestrian Safety
 - \$449,000

Little Nogales Drainage Study: Project Overview

- One of only two routes from off-reservation to the San Xavier del Bac Mission
- Little Nogales Road floods every year during heavy rains
- Flooding problem needs to be solved before other improvements (like a Safe Routes to School pathway) can be constructed

**Santa Cruz
River**

I-19

**Little Nogales
Intersection**



© 2009 Tel Atlas

Google™

Pointer 32°06'36.60" N 110°59'39.90" W elev 2488 ft

Streaming 100%

Eye alt 23152 ft



Little Nogales Drainage Study: Funding Strategies

- Focus on necessary first steps
- Focus on aspects of the project that fit potential funding criteria
- Once again—Good Working Relationships with our local COG and neighboring jurisdictions

Little Nogales Drainage Study: Funding Sources

- Project Development Activity Fund
 - \$50,000
 - Conducting an engineering and drainage study

Pedestrian Access & Safety Study: Project Overview

- No sidewalks or paths on the District
- A community with a high incidence rate of diabetes could benefit from such facilities
- District has need of a comprehensive look at Pedestrian Access and Safety

Pedestrian Access & Safety Study: Funding Strategies

- The study is a funding strategy by itself
- It will identify future pedestrian projects and potential funding sources for those projects
- It will demonstrate to potential funders that there each project is a part of a greater whole

Pedestrian Access & Safety Study: Funding Source

- Planning Assistance for Rural Areas (PARA)
 - \$100,000
 - An ADOT program
 - Fully administered by ADOT with input from SXD
 - SXD does not have to sign contract or pay bills
 - SXD has input on selection of consultant and development of study products



Summary

- Good relationships with local COG and neighboring jurisdictions
- Don't wait until you have all the answers
- Focus on the funder's priorities
- A picture is worth 1,000 words
- Emphasize the regional impact



Any Questions?